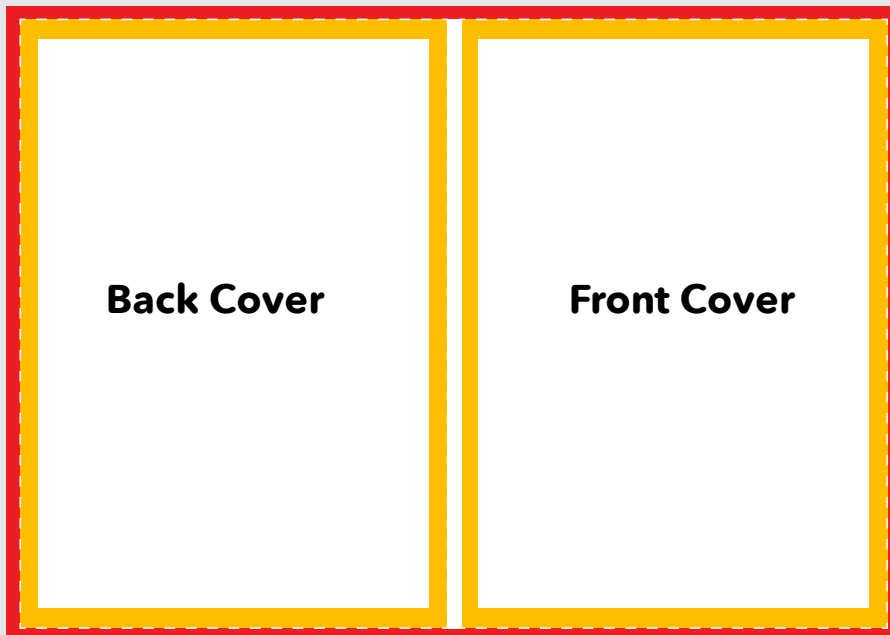


# Presentation Folders

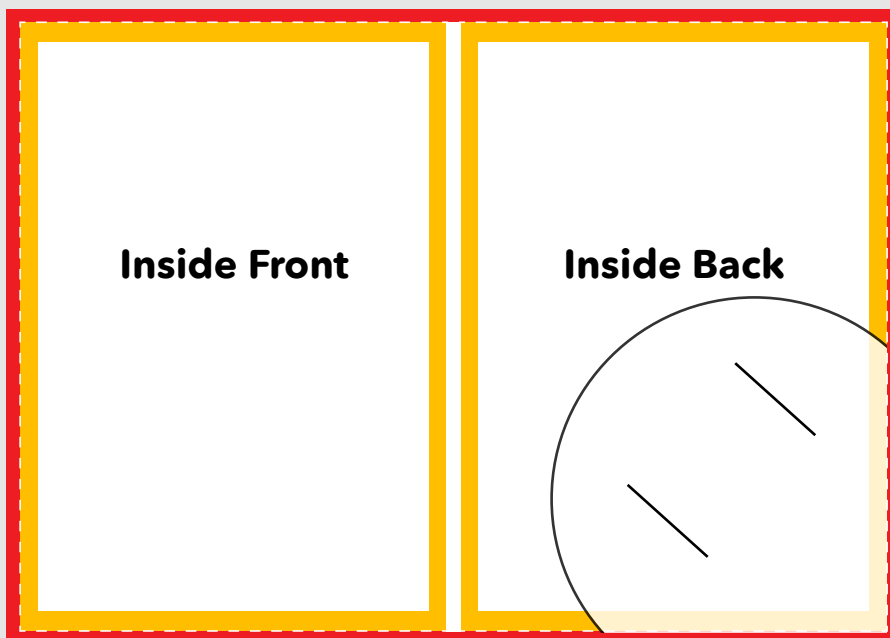
supplying guide for presentation folders

Gusset



Back Cover

Front Cover



Inside Front

Inside Back

## Presentation Folder Checklist

- ✓ Artwork is 300dpi
- ✓ CMYK Colour profile
- ✓ All fonts embedded
- ✓ Artwork correct size

## Gusset

The size of the gusset you choose will determine the amount of items you can fit within the folder. Folders which need to fit a large range of materials will need a larger gusset.

## Printed Pocket

The pockets for our presentation folders are pre-cut before being manually placed onto the folders. They only come in white.



## Bleed (3mm)

The bleed area extends 3mm beyond the edge of your finished document. Colours and images must extend beyond the edge of the document to prevent unwanted white borders around the edge of your finished document. Note that this 'bleed' will be trimmed during the finishing process so ensure that no important details are set up to print in this area.

## Safe Area (5mm)

It is recommended that your artwork is at least 5mm from the edge of the page if it is not meant to bleed off. Printed borders placed too close to the edge of a page may look uneven when the job is trimmed.

## Need more help?

We have a range of templates for you to choose from!  
You can find them at the bottom of each product page.